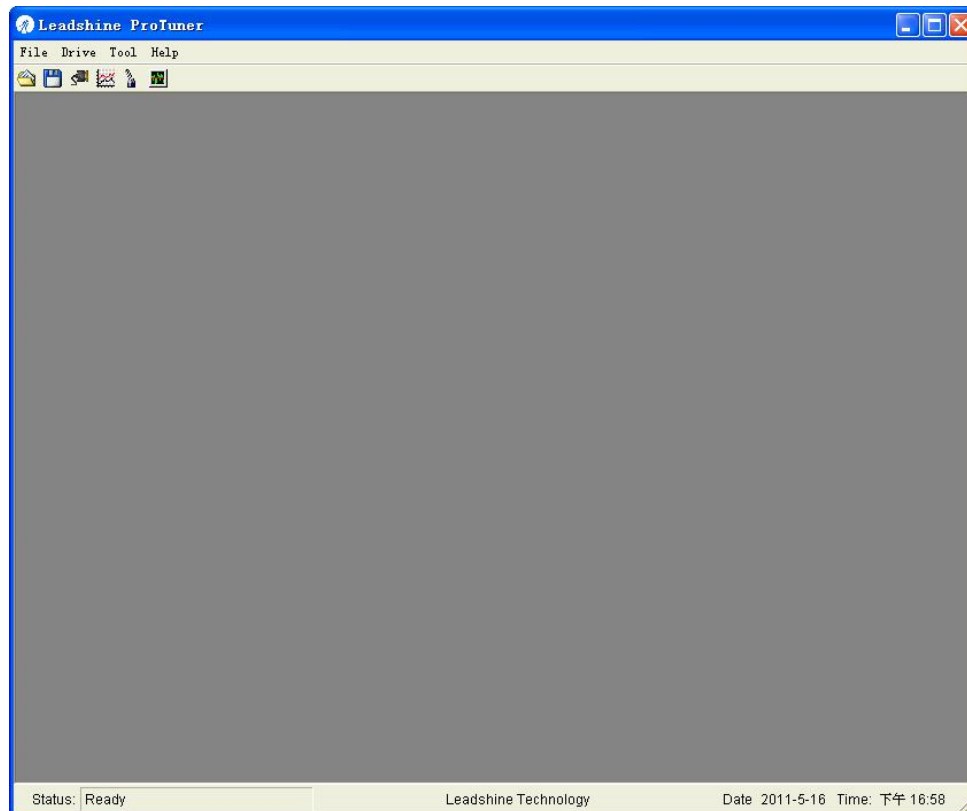


---

# Introduction to ProTuner for the ACS606

## Main Window



## Menu and Toolbar

### File

#### Open

Open a configuration file from disk.

**Note:** The parameters will download to the drive automatically.

#### Save

Save the configuration to a file.

#### Save as

Save the configuration to as another file.

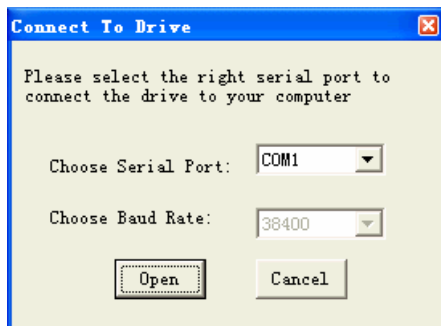
## Exit

Exit the ProTuner.

## Drive

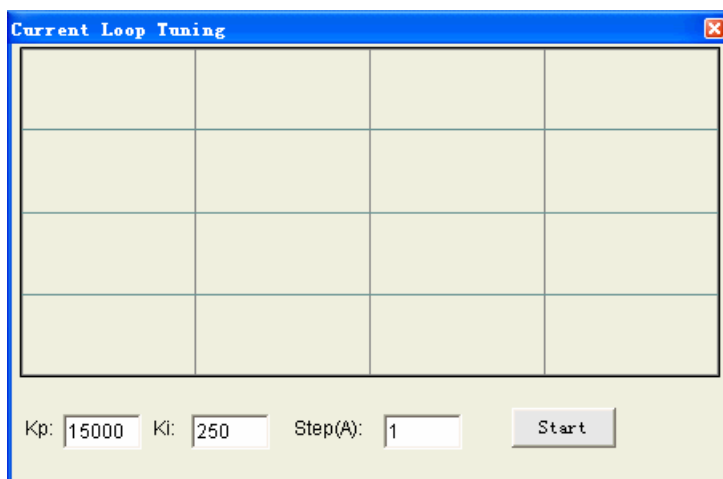
### Connect to drive

Click to open the communication setup window. Then select the right serial port connected to the ACS606 and click the Open button.



### Current Loop

Click to open the Current Loop Tuning window. Tune the Kp (Proportional Gain) and Ki (Integral Gain) of driver's current loop to optimize responses with different motors. Start/Restart a Step Response test to get an optimum response.



### Kp: Current loop Proportional Gain

Proportional Gain determines the response of the driver to current setting command.

Low Proportional Gain provides a stable system (doesn't oscillate), has low

stiffness, and large current error, causing poor performances in tracking current setting command in each step. Too large Proportional Gain values will cause oscillations and unstable systems.

### **Ki: Current loop Integral Gain**

Integral Gain helps the driver to overcome static current errors. A low or zero value for the Integral Gain may have current errors at rest. Increasing the Integral Gain can reduce the error. If the Integral Gain is too large, the systems may “hunt” (oscillate) about the desired position.

### **Step**

It is the command value for the step test. Setting range is 0.5-6A.

### **Start**

Click to start a Step Response test.

### **Position Loop**

Click to open the position loop tuning window which includes four tabs: **Parameter**, **Internal Pulser**, **Scope Setting** and **Signal Setting**. The user can tune the PID (Proportional Gain, Integral Gain and Derivative Gain) of the position loop and get the visual result from the scope. The related parameters for the position mode control can also be configured in this window.

### **Parameter tab**

### **Kp: Position Loop Proportional Gain**

Proportional Gain determines the response of the system to position errors. Low Proportional Gain provides a stable system (doesn't oscillate), has low stiffness, and

large position errors under load. Too large Proportional Gain values will cause oscillations and unstable systems.

### **Ki: Position Loop Integral Gain**

Integral Gain helps the control system overcome static position errors caused by friction or loading. The integrator increases the output value as a function of the position error summation over time. A low or zero value for the Integral Gain may have position errors at rest (that depend on the static or frictional loads and the Proportional Gain). Increasing the Integral Gain can reduce these errors. If the Integral Gain is too large, the systems may “hunt” (oscillate at low frequency) about the desired position.

The screenshot shows a software window titled "Position Loop Tuning". At the top, there is a table with columns for "Cur.", "mA", "Vel:", "r/min", "Pos:", "p", and "Time:", with "ms" indicated at the end of the "Time:" column. Below this table is a large empty grid. At the bottom of the window, there are several input fields for tuning parameters: Kp: 5000, CAM Numerator: 1, Encoder Resolution (CPR): 4000, Ki: 300, CAM Denominator: 1, Motor Pole Pairs: 2, and Kd: 5000. There is also a "Following Error Limit" field set to 4000 and a "Start" button. At the very bottom, there are four tabs: "Parameter", "Internal Pulser", "Scope Setting", and "Singal Setting".

### **Kd: Position Loop Derivative Gain**

Derivative Gain provides damping by adjusting the output value as a function of the rate of change of error. A low value provides very little damping, which may cause overshoot after a step change in position. Large values have slower step response but may allow higher Proportional Gain to be used without oscillation.

## **Motor Pole Pairs**

Set number of pole pairs of the servo motor according to motor datasheet (For Leadshine BLM series DC brushless servo motor, it is 2; For Leadshine ACM series AC servo motor, it is 4.)

## **CAM numerator: Numerator of the electronic gear**

It can be set from 1-255.

## **CAM denominator: Denominator of the electronic gear**

It can be set from 1-255.

The actual motor speed can be calculated as the following formula:

$$\text{Velocity ( rpm )} = \frac{(\text{ Pulse Input Frequency }) \times 60}{(\text{ Encoder Line Count }) \times 4} \times \frac{\text{CAM Numerator}}{\text{CAM Denominator}}$$

## **Following Error Limit**

Set the limit of the difference between commanded position and the actual measured position. When position following error reaches Position Following Error Limit parameter setting in the driver, the protection will be activated.

## **Encoder Resolution**

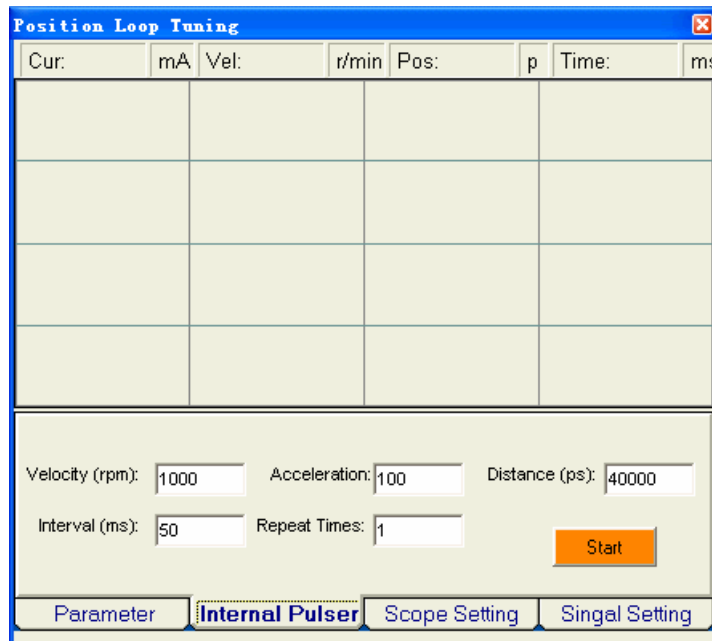
The Encoder Lines parameter here is just for self-test motion controller during tuning, and will not affect the driver to interpret the encoder feedback signal. With regard to the ACS606, feedback resolution is  $\times 4$  encoder line count.

## **Start/Stop**

The user can start or stop self-test by clicking this button.

## Internal Pulser tab

The user can set velocity profile for self motion test and tuning, including Velocity, Acceleration, position move Distance of trapezoidal velocity profile, and Interval, Repeat Times of self motion test.



The screenshot shows a software window titled "Position Loop Tuning" with a close button in the top right corner. The window is divided into several sections. At the top, there is a header bar with labels: "Cur: mA", "Vel: r/min", "Pos: p", and "Time: ms". Below this is a large empty table with 4 columns and 4 rows. The bottom section contains input fields for "Velocity (rpm): 1000", "Acceleration: 100", "Distance (ps): 40000", "Interval (ms): 50", and "Repeat Times: 1". A blue "Start" button is located to the right of the "Repeat Times" field. At the bottom of the window, there are four tabs: "Parameter", "Internal Pulser" (which is selected), "Scope Setting", and "Singal Setting".

## Velocity

Set the maximum velocity of the trapezoid velocity profile. Its unit is RPM.

## Acceleration

Set the acceleration of trapezoidal velocity profile. Its unit is r/s<sup>2</sup>.

## Distance: Move Distance

Set the distance required to move. Its unit is pulses (counts).

## Interval

Set the interval between positive rotation and negative rotation. Its unit is ms.

## Repeat Times

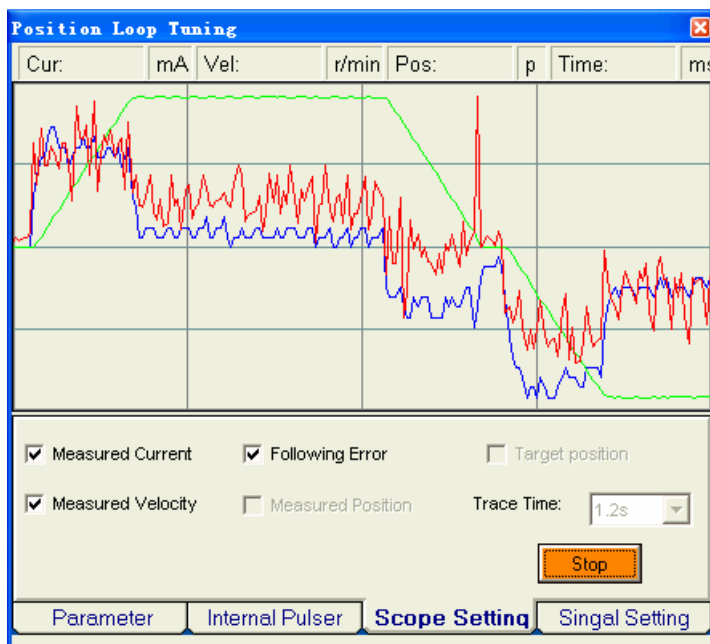
Set the repeat times of positive rotation and negative movement.

## Start/Stop

The user can start or stop self-test by clicking this button.

## Scope Setting tab

The user can choose signals displayed in the scope of this window and set their Trace Time. These signals include actual measured current, actual measured velocity, command position, actually measured position and position Following Error.



## Measured Current: Actual Measure Current

Click to display the actual measured current of the motor coil in the scope.

## Measured Velocity: Actual Measure Velocity

Click to display the actual measured velocity of the rotation in the scope.

## Position Following Error

Click to display the position following error of the rotation in the scope. It is the difference between the command position and the actual measured position.

## Command Position

Click to display the command position in the scope.

## Measured Position

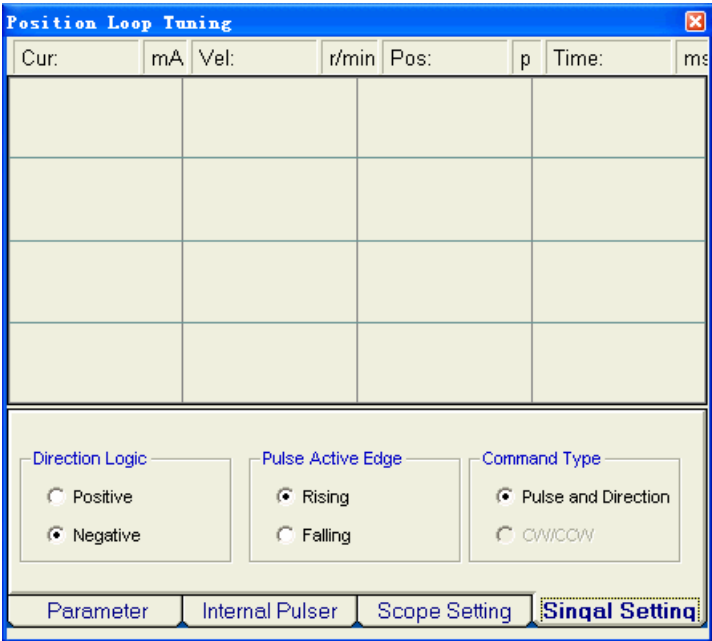
Click to display the actual measured position in the scope.

## Start/Stop

The user can start or stop self-test by clicking this button.

## Signal Setting tab

The user can configure the direction logic, the active edge and the type of the command signal.



## Direction Logic

Define the rotation direction when the direction input is high level.

Note: The actual direction is also related to the motor connection.

**Positive:** The rotation direction is positive when the direction input is high level.

Please note that the actual direction is also related to the motor connection.



**Negative:** The rotation direction is negative when the direction input is high level.

Please note that the actual direction is also related to the motor connection

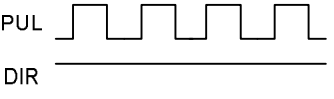
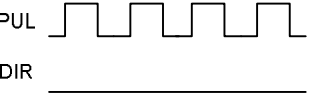
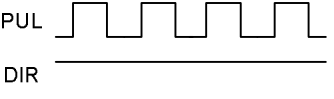
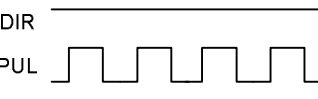
### Pulse Active Edge

Set the triggered edge of pulse command signal.

**Rising:** The motor moves one full step or micro step when the pulse level changed from LOW to HIGH.

**Falling:** The motor moves one full step or micro step when the pulse level changed from HIGH to LOW.

### Command Type

Command Mode	Rotate Direction	
	Clock Wise	Counter Clock Wise
<b>Pulse &amp; DIR</b>		
<b>CW/CCW</b>		

**Note:** 1. The actual rotation direction is also related to the motor connection.

2. The ACS606 does not support the CW/CCW command mode.

### Download To Drive

Download the current configurations to the ACS606.

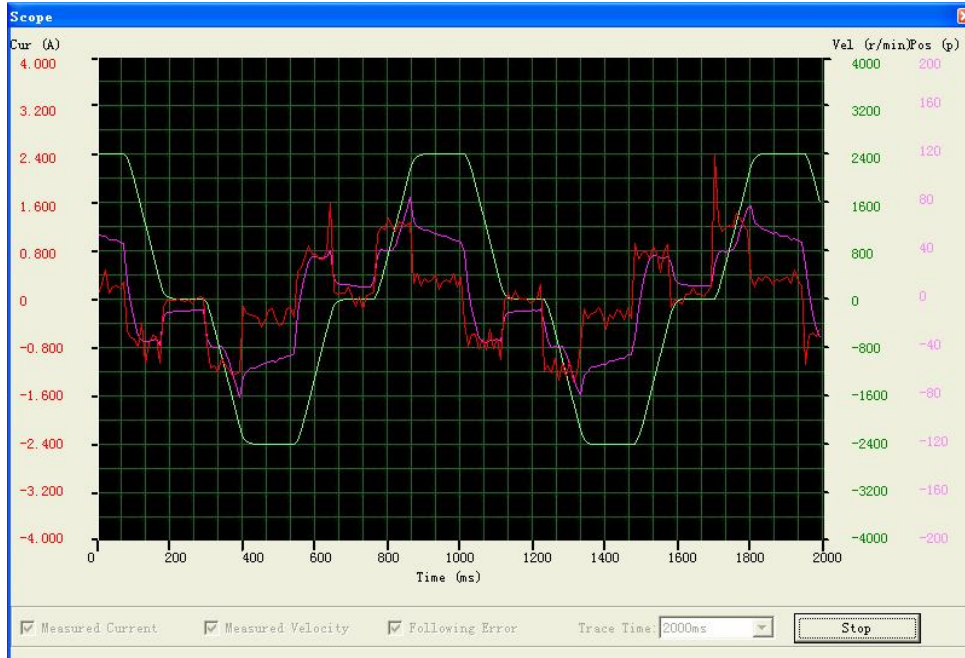
### Reset Drive

Restore the default configuration from the default file. Both the RAM and EEPROM of the ACS606 will be reset to the default factory configuration.

## Tool

## Scope

This window displays the required signals in real time.



## Measured Current: Actual Measure Current

Click to display the actual measured current of the motor coil in the scope.

## Measured Velocity: Actual Measure Velocity

Click to display the actual measured velocity of the rotation in the scope.

## Position Following Error

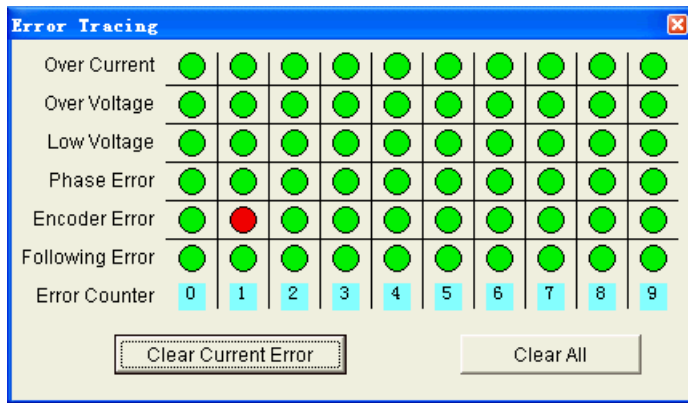
Click to display the position following error of the rotation in the scope. It is the difference between the command position and the actual measured position.

## Start/Stop

Start/Stop to display the required signal.

## Error Tracing

This window shows both the present status of each error event and their history.



**Over Current:** Over-current Protection.

Protection will be activated when continuous current exceeds the limit.

**Over Voltage:** Over-voltage Protection.

When power supply voltage exceeds  $63 \pm 1.5$  VDC, protection will be activated.

**Low Voltage:** Under-voltage Protection.

When power supply voltage is lower than  $16.5 \pm 1.5$  VDC, protection will be activated.

**Phase Error:** Phase Error Protection.

Motor power lines wrong & not connected and encoder feedback signals A/B phases wrong connected will activate this protection.

**Encoder Error:** Encoder Error Protection.

No feedback signals or wrong encoder/hall sensor feedback signals will activate this protection.

**Following Error:** Position Following Error Limit Protection.

When position following error reaches Position Following Error Limit parameter setting in the driver, this protection will be activated.

**Error Counter**

It is used to display current error(s) and current error history.

### **Clear Current Error**

The user can clear current error(s) by clicking this button.

### **Clear all**

The user can clear all error(s) including error history by clicking this button.

### **Help**

### **User Manual**

Click to open the user manual.

### **About**

Click to view the ProTuner information.

### **Tuning Example**

#### **Current Loop Tuning Example**

Below is an example to show the tuning procedure of current loop based on Leadshine BLM57130-1000.

**Power Supply:** 24VDC

**Motor Specification:**

0.57Nm@3000RPM, Phase resistance=0.63Ohm

Phase Inductance=1.55mH, Encoder Lines = 1000

**Step 1:** See figure 3-1. Set test **Step** 1 Amp and begin the tuning with small **Kp** and zero **Ki**. Here we give **Kp** 4000. Please hit the “Enter” key after entering in the number.

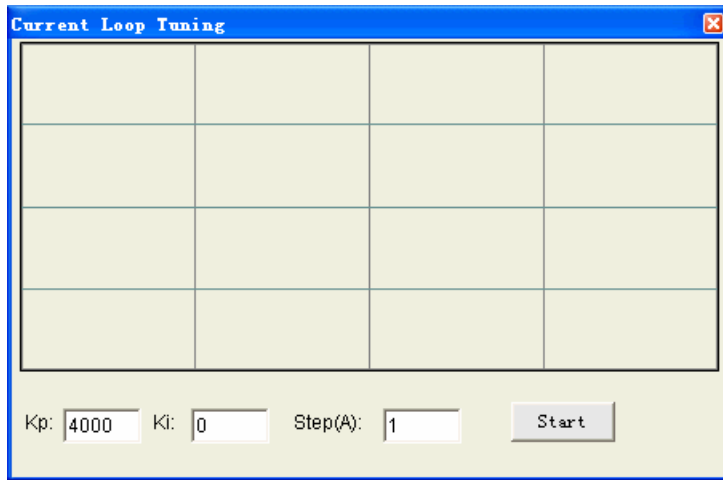


Figure 3-1: Initial value for  $K_p$ ,  $K_i$  and Step for current loop tuning

**Step 2:** Click the Start button and the plot window will show two curves. The red one is target current and the green one is actual measured current. There is large gap between them in the scope. It indicates that a large  $K_p$  need to be introduced. See figure 3-2.

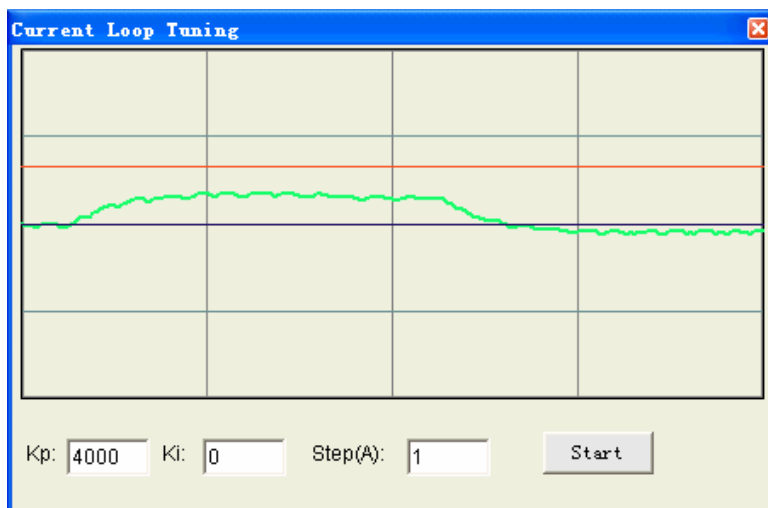


Figure 3-2: Current loop tuning with  $K_p=4000$ ,  $K_i=0$

**Step 3:** Increase  $K_p$  to 6000 and click Start. The gap between target value and actual value is smaller but a higher  $K_p$  is needed. See figure 3-3.

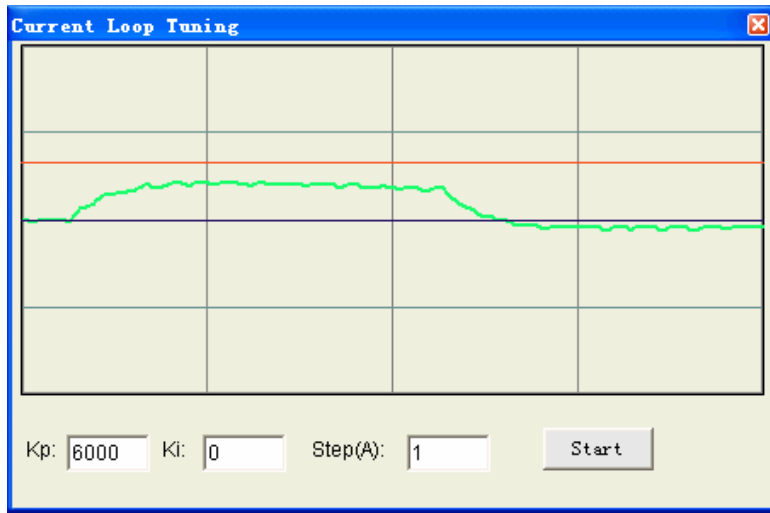


Figure3-3: Current loop tuning with with  $K_p=6000$ ,  $K_i=0$

**Step 4:** Give  **$K_p$**  7000, 9000, 12000, 15000 and click **Start**, respectively. The green curve is getting more and more close to the red curve. See figure 3-4.

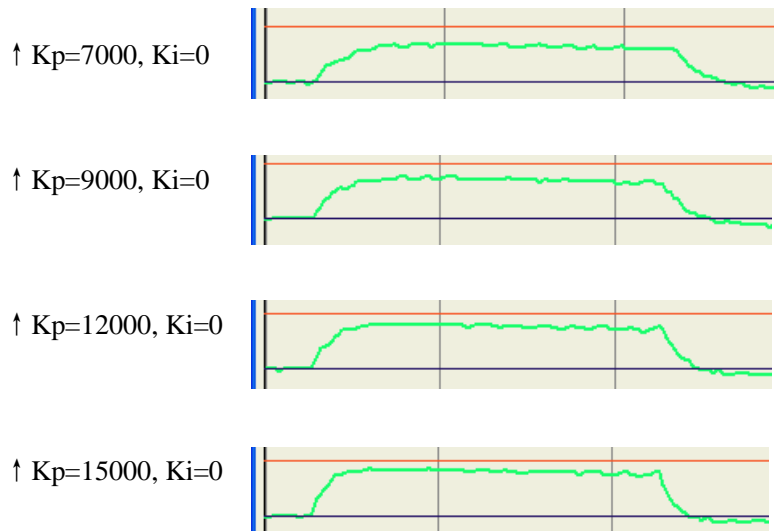


Figure3-4: Current loop tuning with with  $K_i=0$  and increasing  $K_p$

**Step 5:** Now  **$K_p$**  is relative good enough. But there is still gap between the green curve and the red curve when we use the mouse to zoom in it as shown in figure 3-5. There is also big vibration, which will cause motor noise, on the green curve. So we need to introduce  **$K_i$** , the integral gain to reduce the “gap” or steady error at the constant part. It follows the same procedure as  **$K_p$** . Too high  **$K_i$**  will causes big vibration, system lag and makes the performance worse. See figure 3-6 for this procedure. Increase  **$K_i$**  until the gap can be accepted and not causes much vibration.

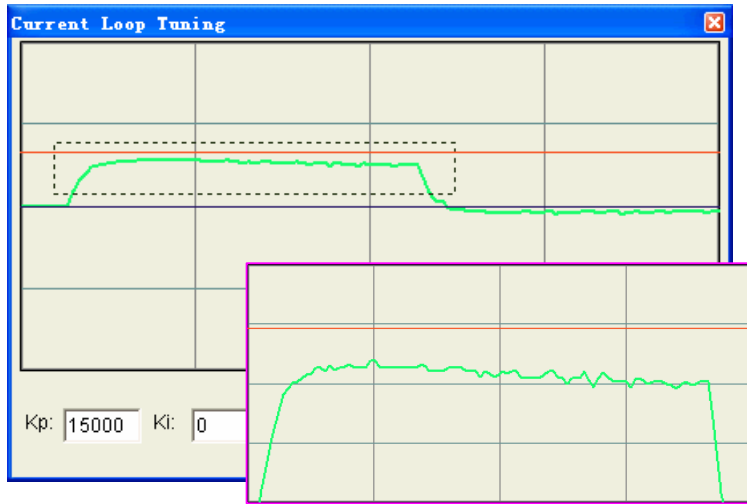


Figure3-5: Drag a rectangle to zoom in the steady error

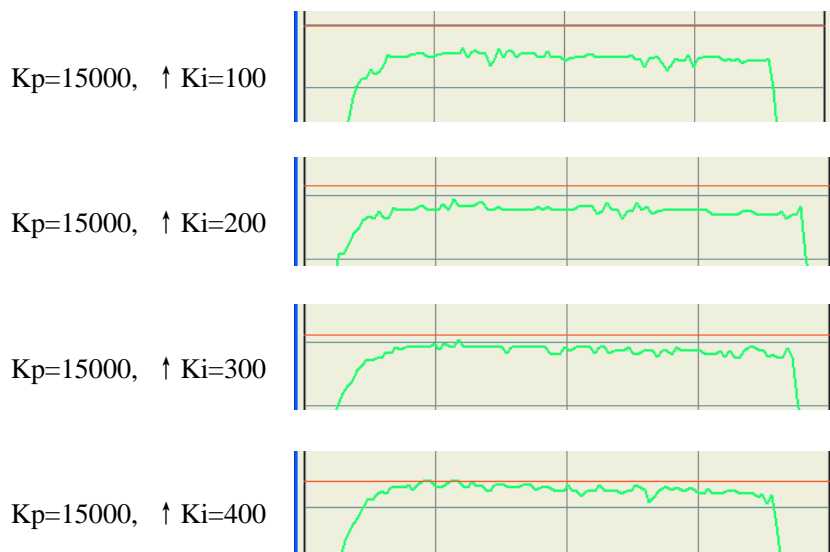
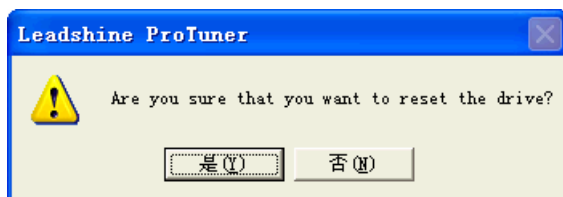


Figure3-6: Current loop tuning with  $K_p=15000$  and increasing  $K_i$

**Step 6:** The current loop tuning is basically finished. You can continue to adjust  $K_p$  and  $K_i$  for better performance. Now the updated  $K_p$  and  $K_i$  is just stored in the driver's RAM. They will be lost when we power off the ACS606. Please click **Drive->Download To Drive** to store the changed value to the driver's EEPROM.



## Position Loop Tuning Example

This example is using the Leadshine BLM57130-1000 with no load.

**Power Supply:** 24VDC

**Motor Specification:**

0.57Nm@3000RPM, Phase resistance=0.63Ohm

Phase Inductance=1.55mH, Encoder Lines = 1000

Before tuning the position loop parameters  $K_p$ ,  $K_v$ ,  $K_d$  as shown in figure 3-7, set self-test motion parameter in the Internal Pulser tab and select the measured velocity, position following error in the Scope Setting tab as figure 3-8. Trace Time affects the display length of the curve. Here we select 700ms.

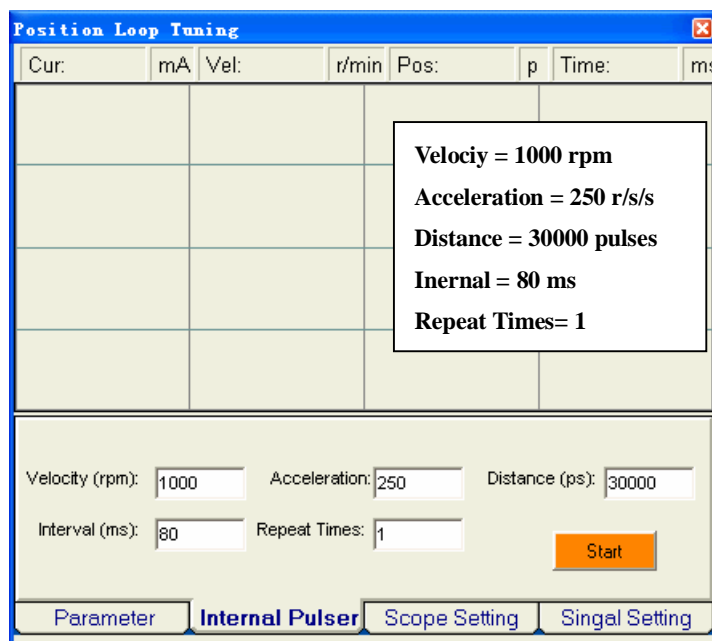


Figure3-7: Internal Pulser Settings for the tuning example



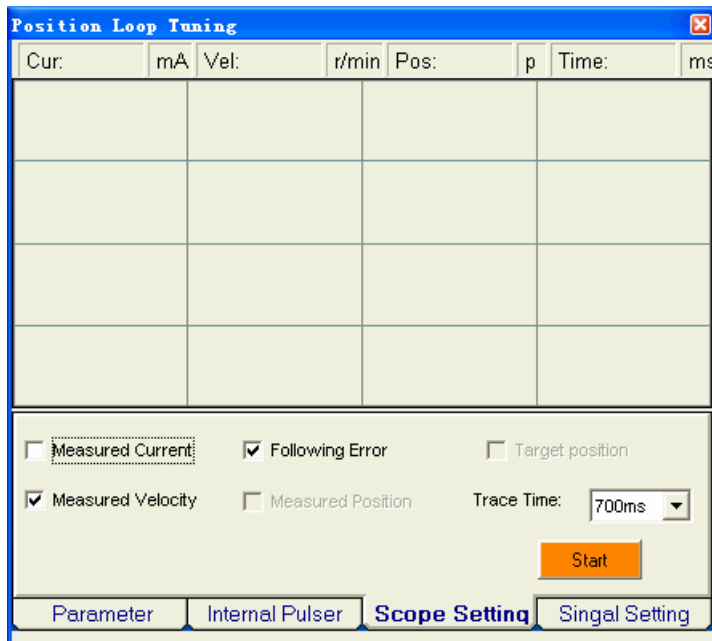


Figure 3-8: Scope settings for the tuning

Our purpose is to get the highest system stiffness but lowest motor noise. However, sometimes we need to trade off because high loop gain leads to big overshoot even vibration. In this example, we start with small loop gain and then back off, at the time when the motor noise begins. The tuning procedure is shown as follows:

- ① Set small **K<sub>p</sub>**, **K<sub>d</sub>** and let **K<sub>i</sub> = 0** ;
- ② Increase **K<sub>p</sub>** and **K<sub>d</sub>** synchronously for smaller position following error.  
Stop and back off when motor noise/vibration begins;
- ③ Increase **K<sub>i</sub>** a bit for smaller steady error ;
- ④ Save changed to the drive by clicking **Drive->Download to drive**.

**Step 1:** Set  $K_p = 1000$ ,  $K_i = 0$ ,  $K_d = 1000$  Encoder line = 4000. Please hit the “Enter” key in the keyboard every time you change the parameters. The initial value for the tuning is depending on supply voltage, motor and reflected load inertia. The above settings may not suitable for your system. Please adjust them according to different result as follows:

Decrease  $V_p/K_p$  if the motor generates big noise.

Increase  $V_p/K_p$  if the drive’s red LED blinks (Protection Mode).

Figure 3-10 shows the velocity (The green curve) and position following error (The

blue curve). The position following error is 165 for the initial  $K_p=K_d=1000$ ,  $K_i=0$ .

**Tip:** Giving an external torque by rotating the motor shaft (or moving the load) manually is good way to check whether the  $K_p$  and  $K_d$  are suitable or not. If the shaft is hard to rotate/move and the motor generates big noise, you should decrease  $K_p$  and  $K_d$ . If it is easy to rotate/move the shaft and the drive goes into protection mode (the red LED blinks), you should increase  $K_p$  and  $K_d$ .

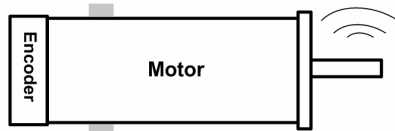


Figure 3-9: Observe the motor noise/vibration when increasing loop gain

**Step 2:** Increase  $K_p$  and  $K_d$  synchronously until motor noise/vibration begins. Then back off. To activate the noise/vibration, sometimes you need to give a disturbance to the load by either starting the self-motion test or trying to push/pull the load. In this example, we give both  $K_p$  and  $K_d$  2000, 3000, 4000, 5000 and 6000. We find that the noise/vibration begins at  $K_p=K_d=6000$ . So we stop increasing  $K_p$  and  $K_d$ . The motor shaft or load is stiff enough at standstill when we back off  $K_p$  to 5000 and the motor noise/vibration can be accepted. And we can see the position following error is reduced when the  $K_p$  and  $K_d$  increase. See figure 3-11, 12, 13 and 14.

**Tip:** The scope displays actual measured velocity (the green curve) and position following error (The blue curve) as shown in figure 6-28. It is the result of the trapezoidal velocity test after clicking **Start** button. Click the button once again to hold on the curves (The button caption is "**Start**"). Otherwise the scope will be updated (The button caption is "**Stop**"). The user can put the mouse (cursor) on the curve to check the curve point value at the top status bar.

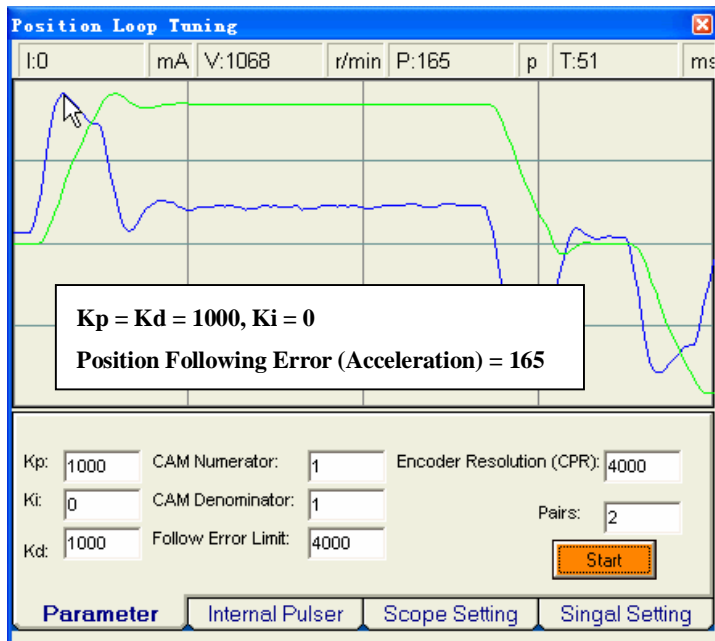


Figure 3-10: Scope fro Position/Velocity Loop Tuning

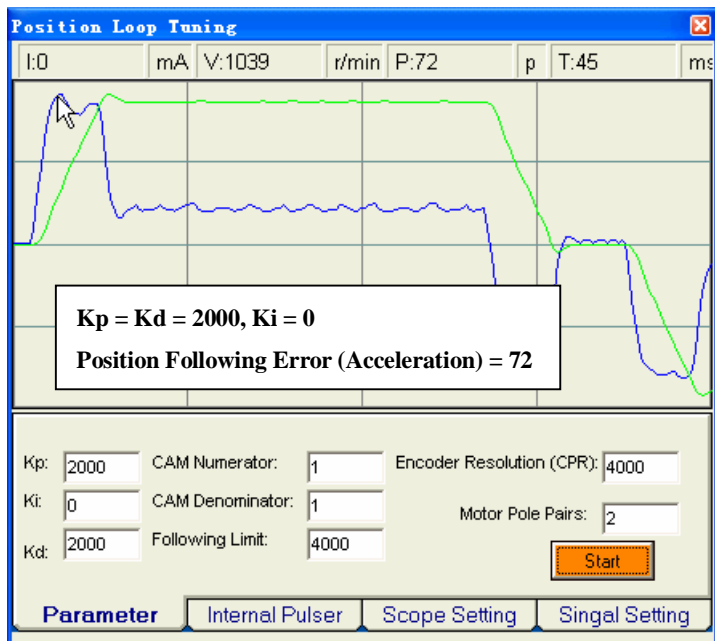


Figure 3-11: Increase Kp to 2000 to maximize the system stiffness

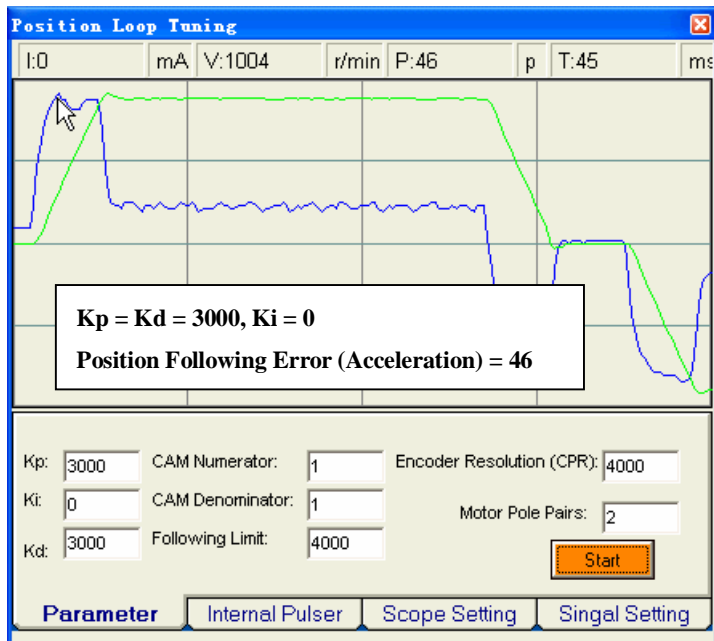


Figure 3-12: Increase Kp to 3000 to maximize the system stiffness

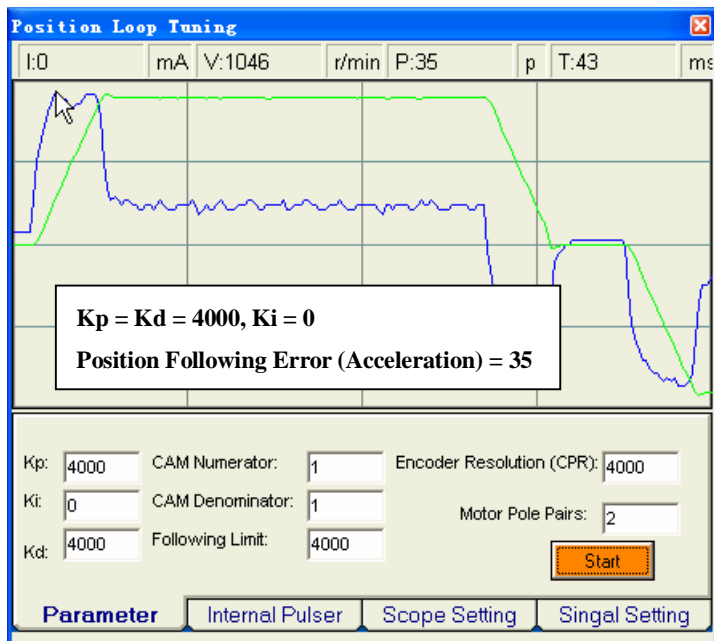


Figure 3-13: Increase Kp to 4000 to maximize the system stiffness

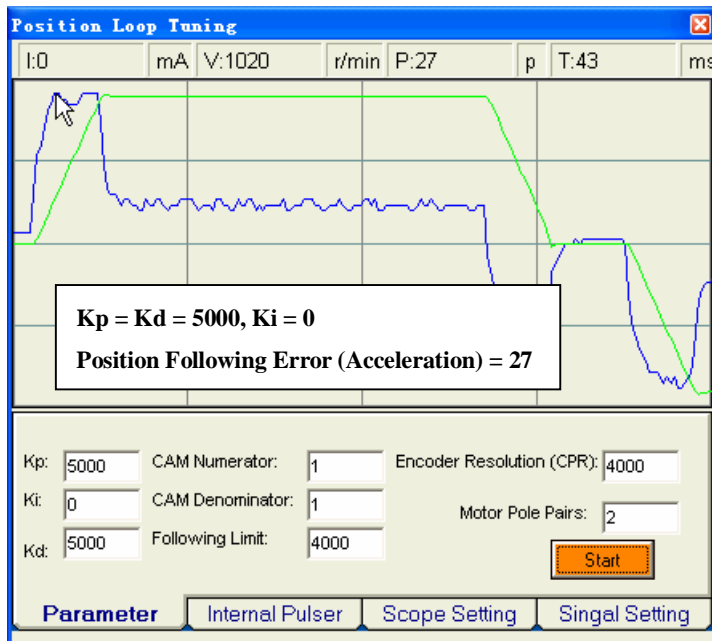


Figure 3-14: Increase  $K_p$  to 5000 to maximize the system stiffness

**Step 3:** Now the system has been basically tuned. But there is still large position error during constant velocity. See figure 3-15. We can increase the integral gain  $K_i$  a bit to reduce the error. See figure 3-16, 17 and 19 for this procedure. Please note that too large  $K_i$  will lead to bad result.

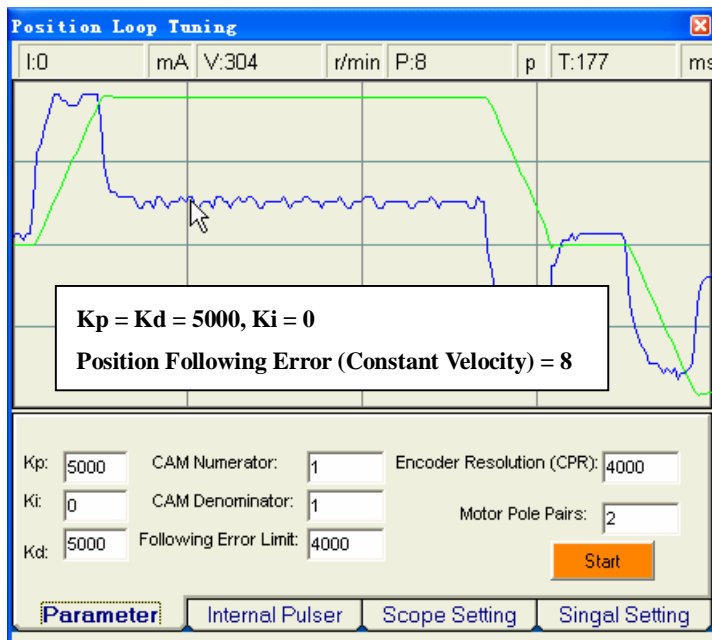


Figure 3-15: Large Position Following Error when  $K_i = 0$

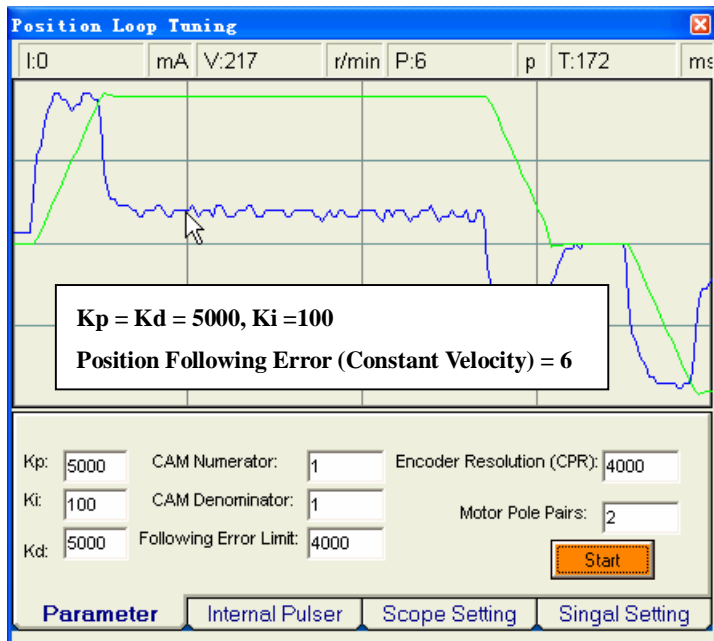


Figure 3-16: Increase Ki to 100 for Smaller Position Error

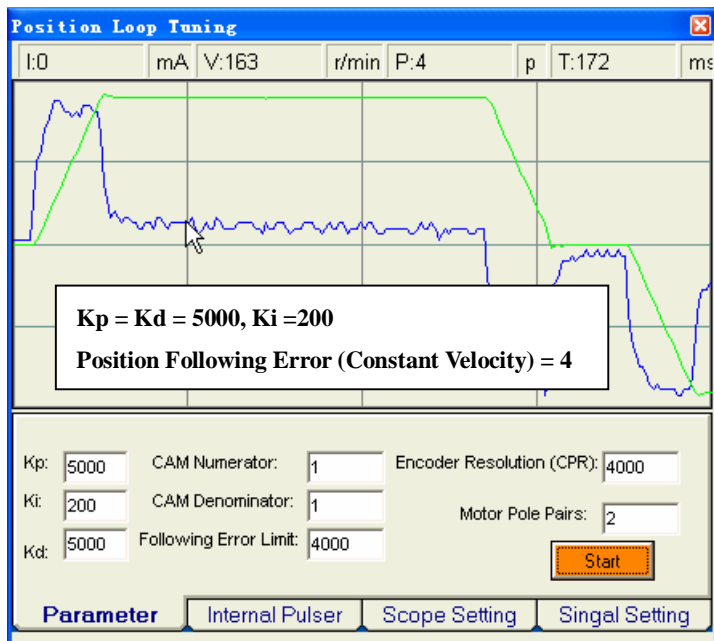


Figure 3-17: Increase Ki to 200 for Smaller Position Error

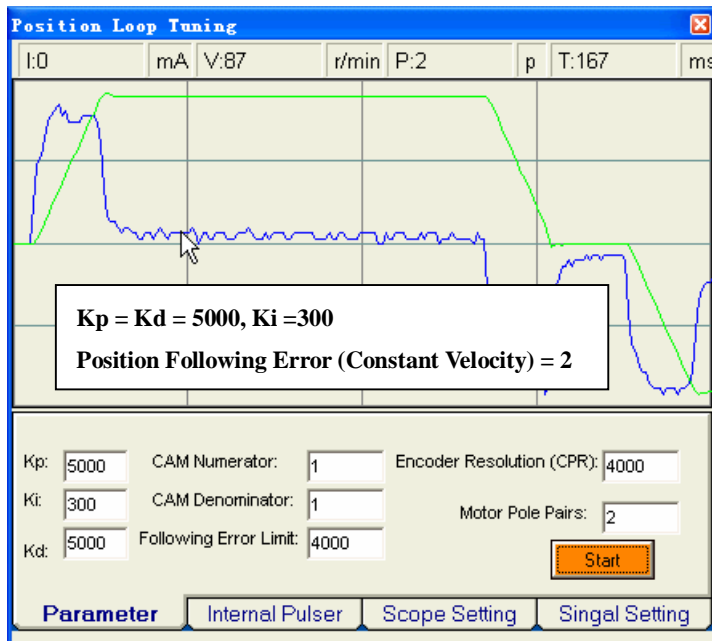


Figure 3-18: Increase Ki to 300 for Smaller Position Error

**Step 4:** The tuning is finished. You can adjust the  $K_p$ ,  $K_d$  and  $K_i$  if necessary. The  $K_d$  has not be the same as the  $K_p$  but the difference should be large. **After that, the last thing is save all the changed to the drive. Please select Drive->Download to Drive in the menu bar.**

**Tip:** Remember that tuning the servo is to get satisfying performances, getting the best performances of the servo is a time consuming work. So if the servo performance can meet your application requirements, then the easier tuning way the better. Just like if the performances of the products can meet your application requirements, then the cheaper the better.